

## Laser scanning confocal microscope Zeiss LSM 700

**Location:**

CELLIM, building A26, room 1S25

**Booking alias:**

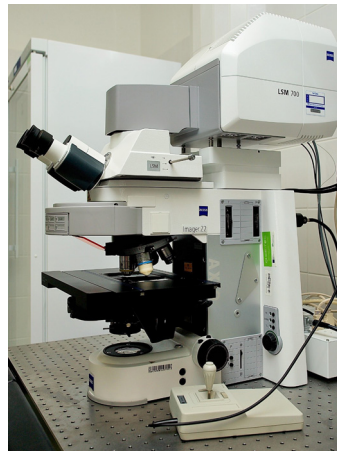
LSM700-A26

**Contact:**
[cellim@ceitec.muni.cz](mailto:cellim@ceitec.muni.cz)
[petra.machackova@ceitec.muni.cz](mailto:petra.machackova@ceitec.muni.cz)
[jakub.pospisil@ceitec.muni.cz](mailto:jakub.pospisil@ceitec.muni.cz)

T: 54949 7085/6133

**Reservations:**
<https://booking.ceitec.cz/PlanningBoard.html>
**Overview:**

Upright microscope Zeiss Axio Imager.Z2 with confocal unit LSM 700. Microscope is equipped with three solid state lasers, two PMT detectors for fluorescence and one T-PMT detector for transmitted light.



More information:


**Specifications:**
**Objectives**

Plan-Neofluar 10x / 0.30 AIR

Plan-Neofluar 20x / 0.40 AIR

C-Apochromat 40x / 1.20 W

Plan-Neofluar 63x / 1.30 W

Plan-Apochromat 63x / 1.40 OIL

VIS IR 40x / 1.0

(on demand: N-Achroplan 10x/0.3 Wdip)

**Transmitted light techniques**

Brightfield

Differential interference contrast

**Fluorescence light source**

HXP 120V

**Filters**

DAPI (F-set 49), CFP (F-set 47), GFP (F-set 38), DsRed (F-set 43 He), Cy5 (F-set 50), DAPI+FITC+TRIC (F-set 25)

**Lasers**

405 nm, 488 nm, 555 nm

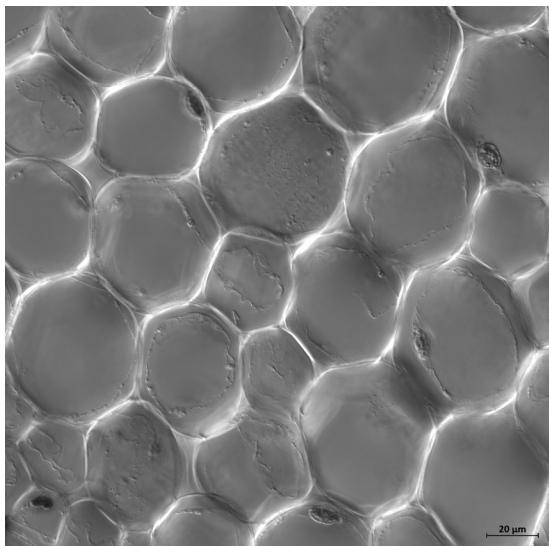
**Software**

Zen Black

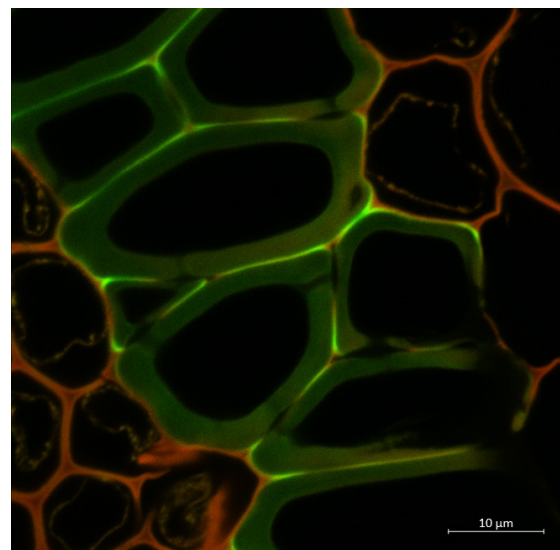
Manual:



Examples:



Cross section of root of *Convallaria sp.* Parenchyma cells of cortex in DIC.  
 Objective: C-Apochromat 40x/1.20 W.



Cross section of root of *Convallaria sp.* Green (laser 488nm): sclerenchyma cells and red (laser 555 nm): parenchyma cells of cortex.  
 Objective: Plan-Apochromat 63x/1.40 Oil.